

Product sheet / Installation manual for the S-Board terrace system

1. About the S-Board system

The S-Boards are made of a composite layer consisting of wood and polymers (*ca. 60% of wood fibres and 40% of polymers*), secured by means of additional coextruded layer of modified polymer. The bottom layer is made of material based on rubber, having perfect dampening properties.

Thanks to this unique design, the S-Board system can be **installed directly on the floor**, without having to use underconstruction. This means that the floor is raised only by 2.2 cm, which enables installing it in places where traditional high systems do not work. S-Board saves not only space, but, first and foremost, investment costs and time needed to implement it.

2. Dimensions and tolerances allowed

2.1. Terrace board

	dimension	tolerance*
length	1200 mm	+/- 3 mm
width	150 mm	+/- 2 mm
height	22 mm	+/- 2 mm
deflection		max. 2 mm per linear metre
weight	2.9 kg / linear metre	+/- 5%

1 m² of terrace = 6.45 linear metres of board

* at the temperature of 25°C

2.2. Finishing bar

	dimension	tolerance*
length	2400 mm	+/- 5 mm
width	26 mm	+/- 2 mm
height	40 mm	+/- 2 mm
deflection		max. 2 mm per linear metre
weight	0.34 kg / linear metre	+/- 5%

* at the temperature of 25°C

3. Properties of the material

3.1. Physical properties

Much lower **absorbability** when compared to traditional composite or wooden materials (up to 2.2%), achieved thanks to coextruded surface, makes this material very resistant to water and thus also to mould, fungi and wood pests.

The structure of boards ensures high form stability even in extreme conditions. The boards are resistant to extreme temperatures from +60°C to – 20°C, however, excess heating of the surface should be avoided, since in case of large mechanical load it can result in damage to the surface.

Due to being a semi-natural (composite) material, S-Boards are subject to slight dimensional fluctuations. Therefore it is important to create expansion joints between each board connection that should not be smaller than 5 mm. This size depends on the width of the installation clip or assembly distance.

Resistance to mould		
Testing method	Test duration	Result
ASTM G21	28 days	Complete resistance
Resistance to scratches		
Testing method		Result
ISO 4586-2		R 2
Resistance to abrasion		
Testing method		Result
ASTM D4060		Index 33
Slip-resistance		
Testing method		Result
DIN 51130		R11
Resistance to UV		
Testing method	Test duration	Result
ISO 4892-2: 2006, Cycle 1	1000 hours	min. 3.5; dE max. 2.5
ISO 4892-1	2000 hours	min. 3.0; dE max. 3.4
Resistance to deformation		
Testing method		Result
EN 1534		87MPa

3.2. Chemical properties

S-Boards made of WPC do not include any toxic heavy metals or other components that would constitute hazard to the environment.

However, they should not be subjected to the activity of strong acids or solvents. In each case, prior to application of oxidizers or cleaners their effect should be tested on an invisible location. It also necessary to maintain caution when using a barbecue grill on the terrace - hot ash or coal briquettes may damage the board surface.

4. Surface

The surface of S-Boards is brushed not only for aesthetic reasons but also in order to achieve appropriate slip resistance, which reduces the risk of falling due to wet surface. However, in special atmospheric conditions (rain, snow, ice) it is necessary to maintain proper caution.

The slip resistance class of S-Board is R11.

5. Colours and their durability

Thanks to the unique coating formula that prevents aging of material, the boards are extremely resistant to unfavourable atmospheric conditions. That is why the S-Board system is not going to require any troublesome and costly impregnation or renovation, even after many years.

The S-Board system is available in the following colours:



The colours of system boards may slightly differ depending on the manufacturing batch and may not be a basis for warranty claims.

The colours presented in all the marketing materials may differ from the actual ones due to the printing specifications or computer display settings.

6. Safety

The installation and usage of the S-Board system is fully safe. It does not contain biocides, that is, biokilling preparations that are usually applied for wood impregnation.

Caution! The S-Board terrace boards are not allowed to be used as a load-bearing structural element in construction. It is required to adhere to the appropriate local construction regulations.

7. Maintenance and care

Even though the board surface does not have to be impregnated, it is 100% resistant to any staining resulting from everyday use of terrace (particularly to grease - it is enough to wash it with water containing a gentle detergent, e.g. dishwashing liquid, in order to make it disappear).

All of this is possible thanks to a special coating that makes the boards not only waterproof but also secured against their deep structure being penetrated by stains.

Thanks to properties of the material of which the S-Board terrace boards are made, it is not necessary to protect them with protective agents (impregnation agent, oil or varnish), contrary to how it is in case of wooden boards.

In order to remove more persistent stains there may be used a high-pressure cleaner (max. 60°C, 80 bar, with minimum distance of 500 mm), without application of rotator nozzles.

8. Tips for processing and installation

One of the advantages of the S-Board system is how easy and quick it can be installed. For processing of S-Boards there will suffice standard tools for wood processing. You can drill holes in the boards, trim them or mill them, provided that a distance of at least 50 mm is kept between the board edge and the hole perimeter. When cutting with circular saw it is recommended to use a blade with alternating teeth made of cemented carbide. Next to the saw, for installation there is going to be necessary a drill for drilling out the assembly holes for quick-assembly studs.

For installation of the S-Board terrace system there should be used only original accessories - installation clips, initial clips and end clips. In case of using other clips not recommended by the manufacturer or performing installation not in compliance to the manual, no claims shall be accepted.

The installation should be carried out on a properly prepared stable floor in the temperature from +5°C to +25°C.

Prior to the assembly it is necessary to make sure that the surface on which we want to install the terrace is completely stable and allows proper fixing of S-Board installation clips so that they cannot move in any direction. For example, when laying the terrace boards on an old surface made of ceramic tiles it is necessary to check whether the tiles are permanently fixed to the floor. This applies also to any other surfaces, such as concrete slabs, cobblestone or concrete underlayments.

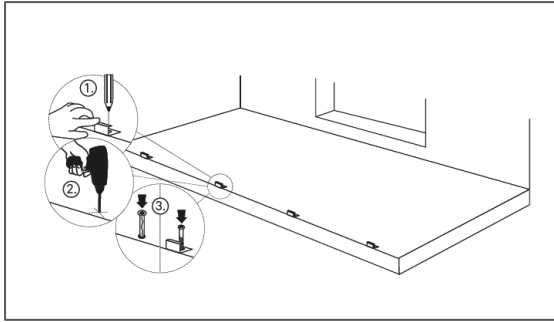
Attention!

The surface has to be even: no more than 5 mm point inequality, no more than 10 mm linear deviation from the level and inclined by 2% in order to ensure proper drainage of water.

8.1. Calculation of the amount of material needed

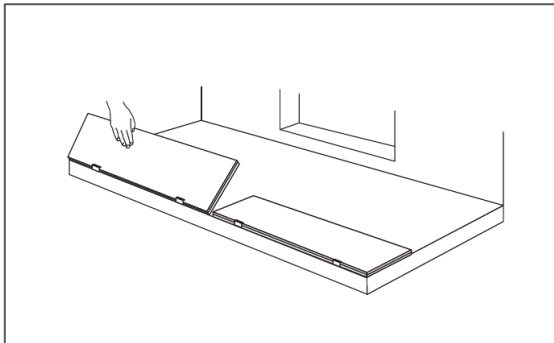
It may be estimated that for 1 square metre of the terrace there are required 5 boards (with length of 1200 mm), 9-11 installation clips, 3-4 initial clips, 0,5-1,0 lm of angle bar (depends on the terrace shape). Nevertheless, prior to commencing any terrace construction there should be calculated the amounts of materials needed. It is even better to prepare a terrace construction drawing.

8.2. Terrace installation



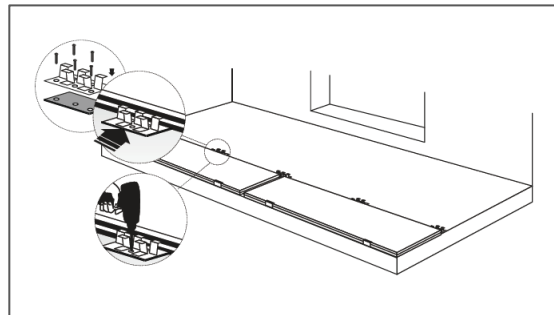
STEP 1.

After prior establishing of a straight line, we install the initial clips along the starting edge of the terrace by means of quick-assembly studs. For every board section there should be used at least **2 fixing clips**.



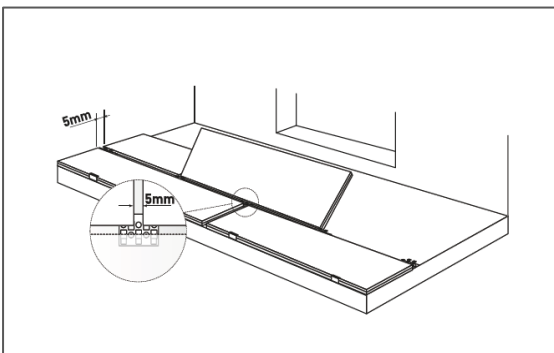
STEP 2.

After fixing the initial clips we can slide the first board in. We continue in the same manner in order to install all the boards on the starting edge of the terrace, remembering to make expansion joints of ca. 5 mm between the boards.



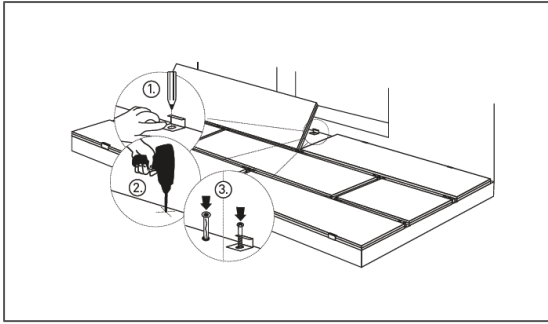
STEP 3.

We commence installation of the second row of terrace boards. We install the installation clips together with additional washers in the groove on the board edge. The distance between the clips should be no larger than 60 cm. Afterwards, we fix the clips by means of studs.



STEP 4.

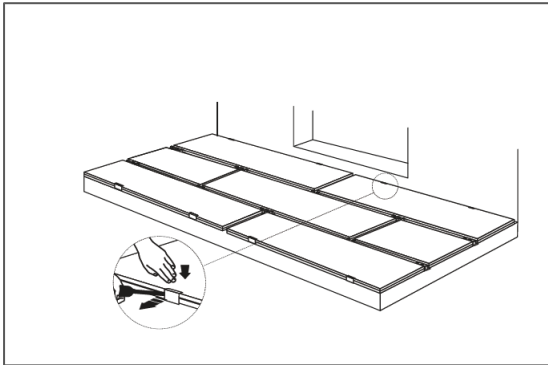
We install in the same manner all the boards in the second row. We install the boards in the following rows alternately, that is, in a running bond pattern. That is why it is important for the middle installation clip to be installed in such a place as to catch both ends of the adjacent board parts. It is also necessary to remember about the necessity of making 5 mm thick expansion joints between the boards connected along their length.



STEP 5.

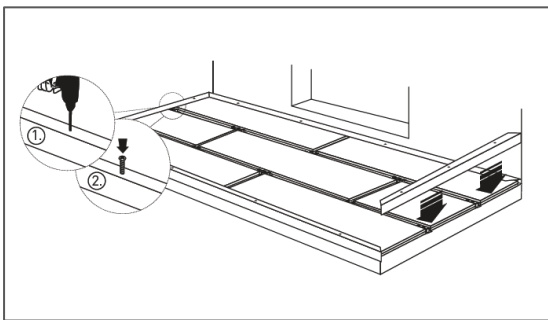
We install the whole terrace surface according to the above instructions.

We secure the last row of boards on the edge by means of initial clips screwed into the floor.



STEP 6.

In order to click-in the last row of boards it is necessary to fold back the upper part of the clip by means of a screwdriver and press the board into the floor.

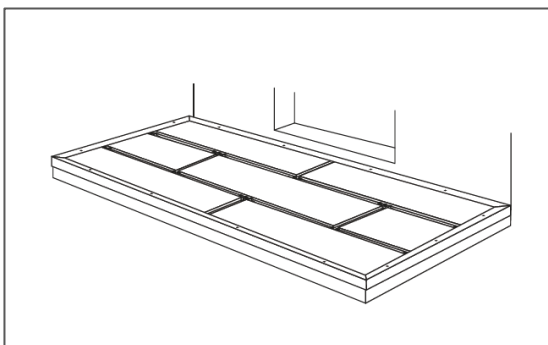


STEP 7.

We commence finishing the terrace edges.

After measuring and proper trimming we install the finishing angle bar

Using a drill we make countersinks in the bar surface in order to make space for the screw head. Next, we fix the bar to the board surface using screws.



STEP 8.

We finish all the visible terrace edges in the same manner.

9. Warranty

The manufacturer warrants, on condition of the surface being used according to its intended use, that **for the period of 10 years** from the purchase date the performance of the terrace boards shall not become altered spontaneously, i.e. the boards are not going to break or delaminate.

The additional **15-year warranty is granted** for the unaltered performance of boards under influence of biological corrosion (rot, that is, destructive effect of fungi leading to decay of the board structure).

Any mechanical damage resulting from improper use of the surface may not constitute basis for warranty claims. Furniture, barbecue grills and other terrace equipment with sharp edges should be secured properly in order to avoid scratching the surface.

The manufacturer reserves the right to introduce changes to the design and properties of the S-Board system.